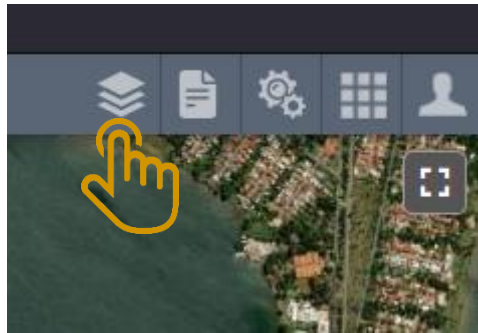
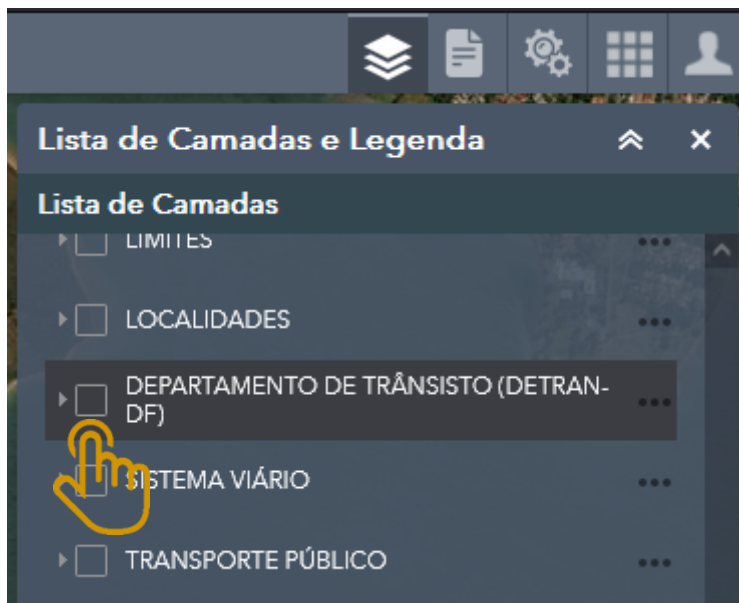


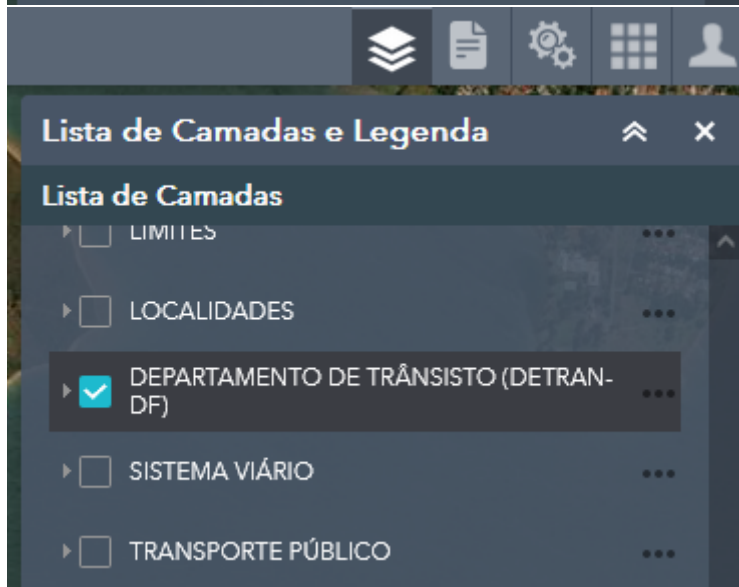
1. Acesse <https://www.geoportal.seduh.df.gov.br/geoportal/>
2. No canto superior direito, abra a “Lista da Camadas e Legenda”:



- a.
3. Procure e habilite a camada “DEPARTAMENTO DE TRÂNSITO DO DISTRITO FEDERAL”:



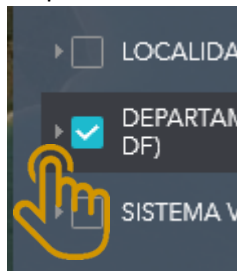
a.



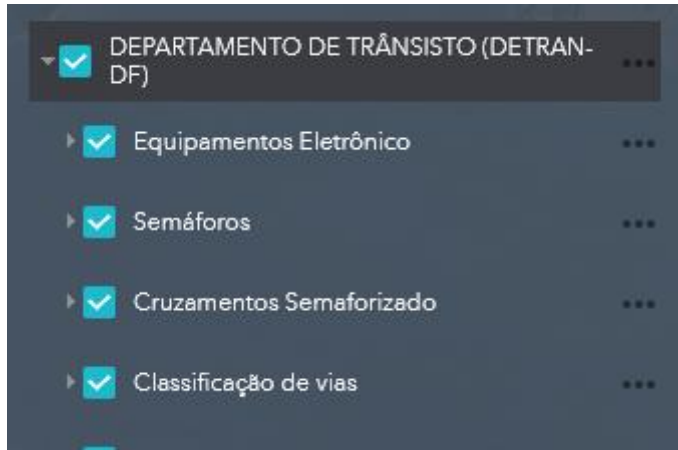
b.

4. Procure e habilite a camada “Equipamentos Eletrônicos”:

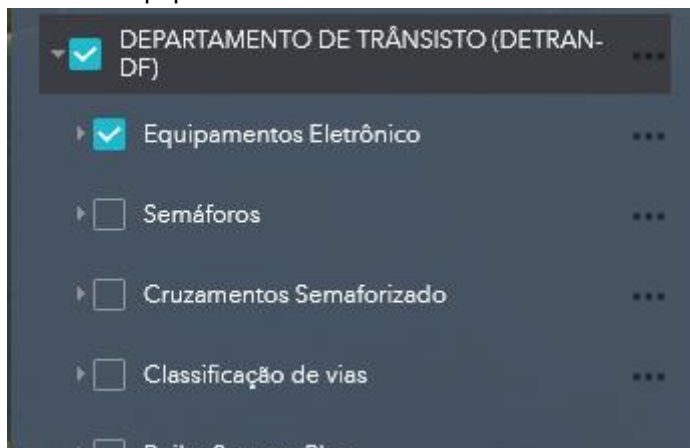
- a. Clique na seta  ao lado do checkbox:



- b.
c. As camadas do Detran-DF devem ser exibidas:

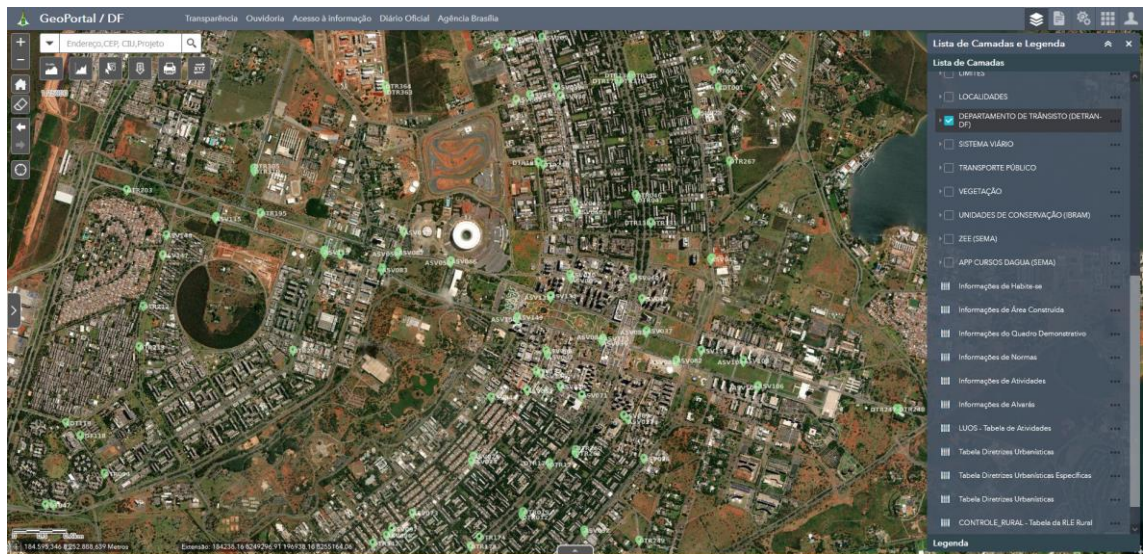


- d.
e. Se preferir, desabilite as demais camadas, mantendo habilitada apenas a camada “Equipamentos Eletrônicos”:

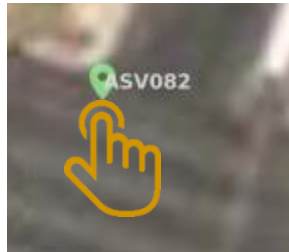


- f.

5. Os marcadores verdes no mapa correspondem aos “Equipamentos Eletrônicos” do Detran-DF.



- a.
6. Aproxime o mapa no seu ponto de interesse e clique sobre um dos marcadores.



- a.
- b. Os detalhes sobre o equipamento devem surgir:



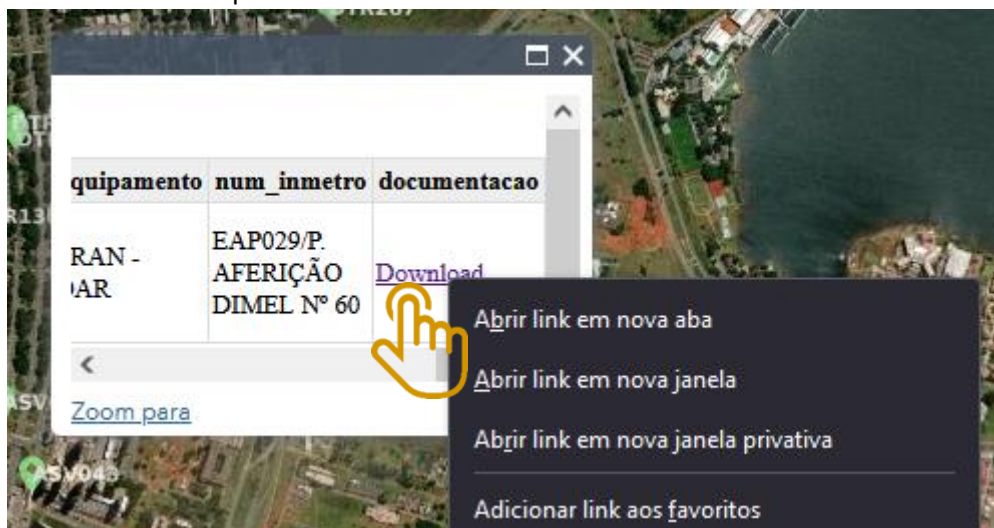
- c.

d. Se preferir, clique em  para expandir os detalhes:



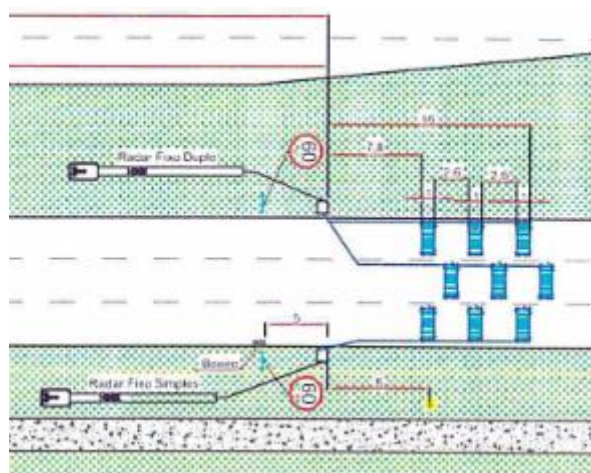
e.

7. Para ver a documentação do equipamento eletrônico, procure o campo "Download" e clique com o botão direito para "Abrir em nova aba".



a.

8. Pronto!



a.